

GREEN CONSTITUTES SDN BHD

ENERGY MANAGEMENT AND AUDITING



INTRODUCTION & OVERVIEW

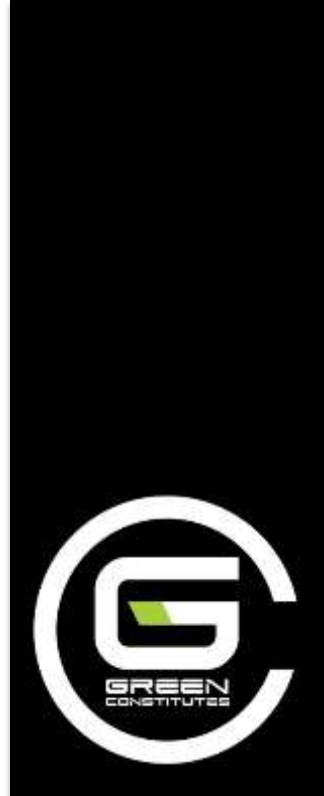
EXECUTIVE SUMMARY

A corporate energy management solution for business and education



OVERVIEW

Would you like to reduce your electricity bill...



while reducing your carbon footprint?

OVERVIEW

A typical PC consumes around 506 kWh of electricity annually



Many PCs and other devices are left on after office hours

OVERVIEW

There are 38 hours in a working week,
and 168 hours in a standard week.

Wouldn't it be great if unused device
can be switched of **AUTOMATICALLY?**

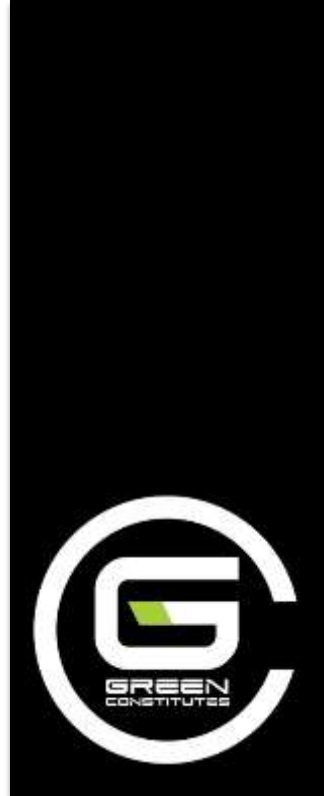
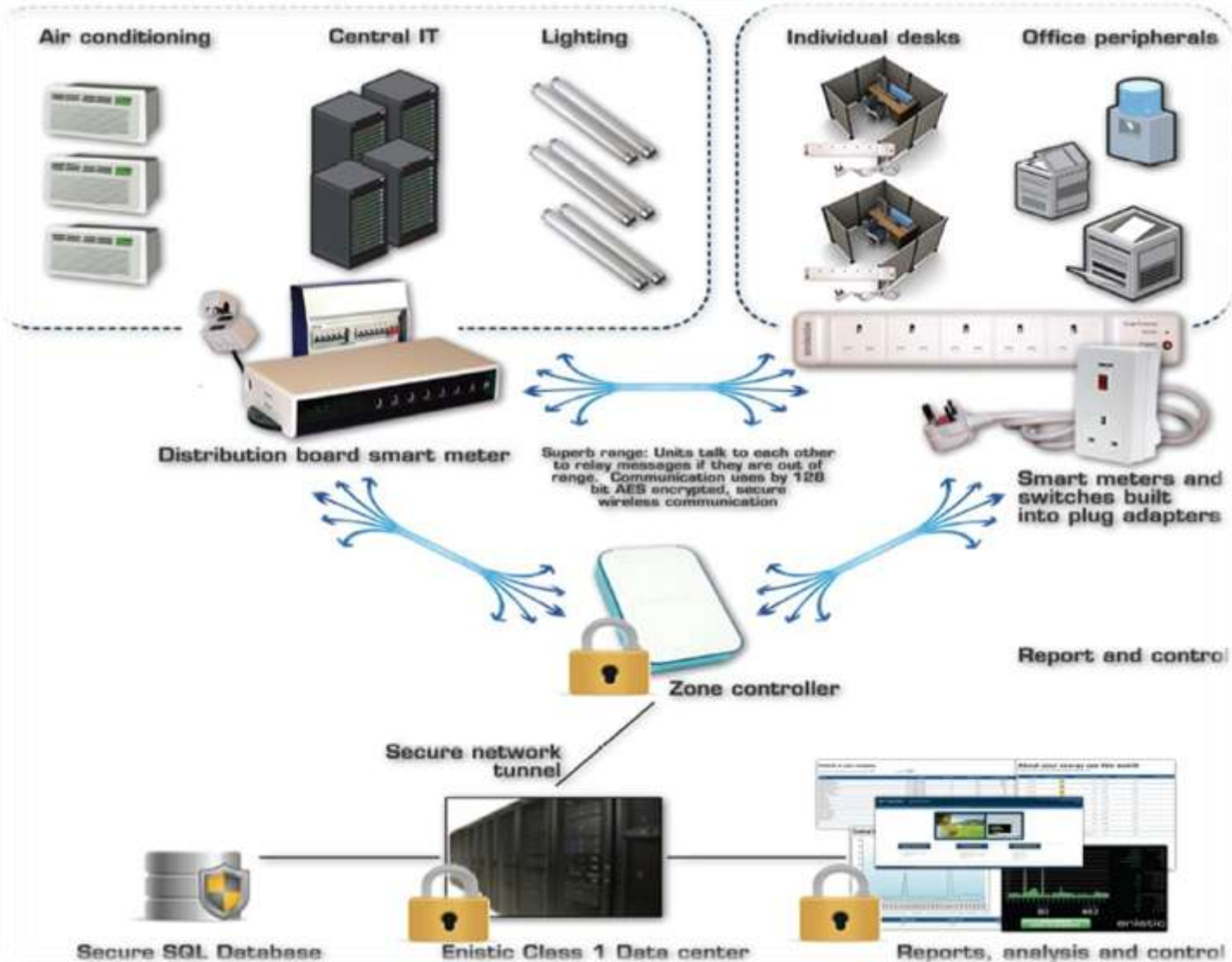


OVERVIEW

- If you can't measure it, you can't improve it
- Green Constitutes measures energy used at company, building, circuit and individual appliance level
- We aim to save 10% of an organizations energy used by measurement, management, and behavioral change



PRODUCTS

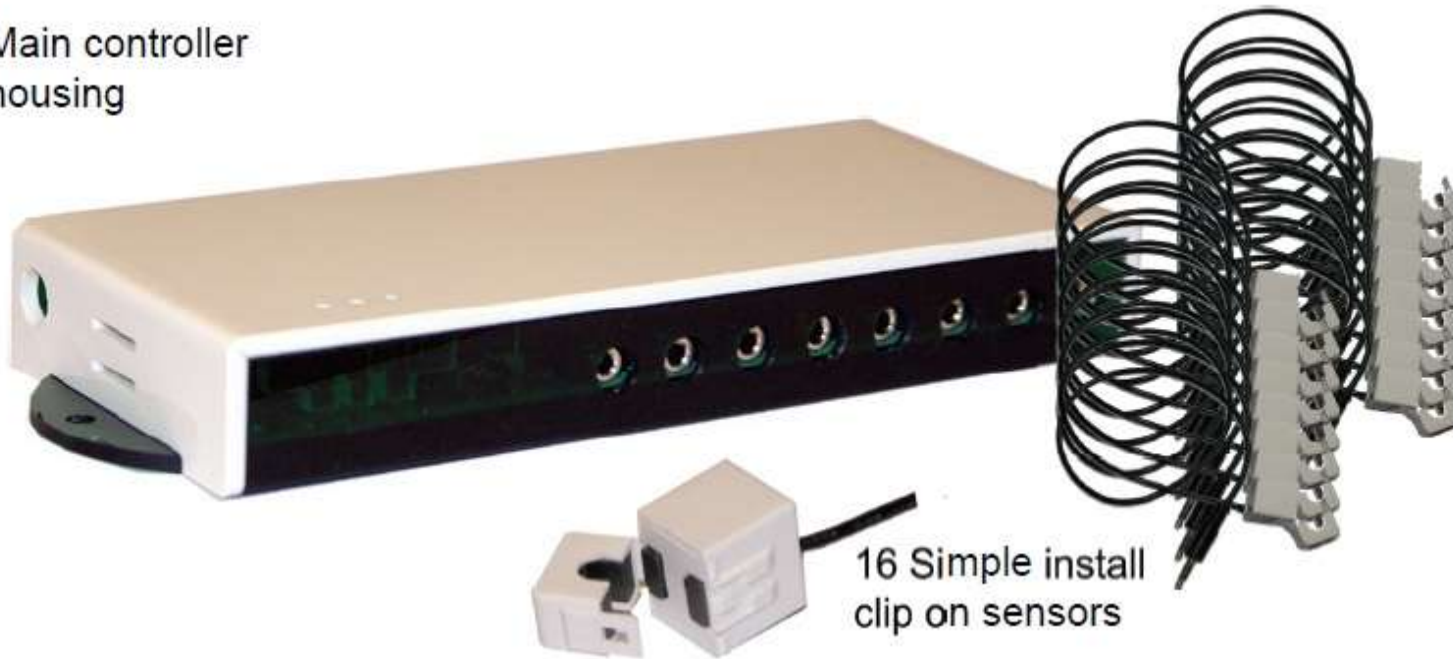


PRODUCTS

DISTRIBUTION BOARD SMART METER

Fix the sensor into your distribution board to monitor appliances such as lighting, air-con, etc.

Main controller housing



16 Simple install clip on sensors



PRODUCTS

Sample energy usage breakdown



Energy use



- Air con
- Lighting
- Desktop IT
- Servers
- Plant



PRODUCTS

PLUG-IN SMART METER

5-way plug-in smart meter. Easy to install, plug the Smart Strip to a wall socket just like a normal socket.



PRODUCTS

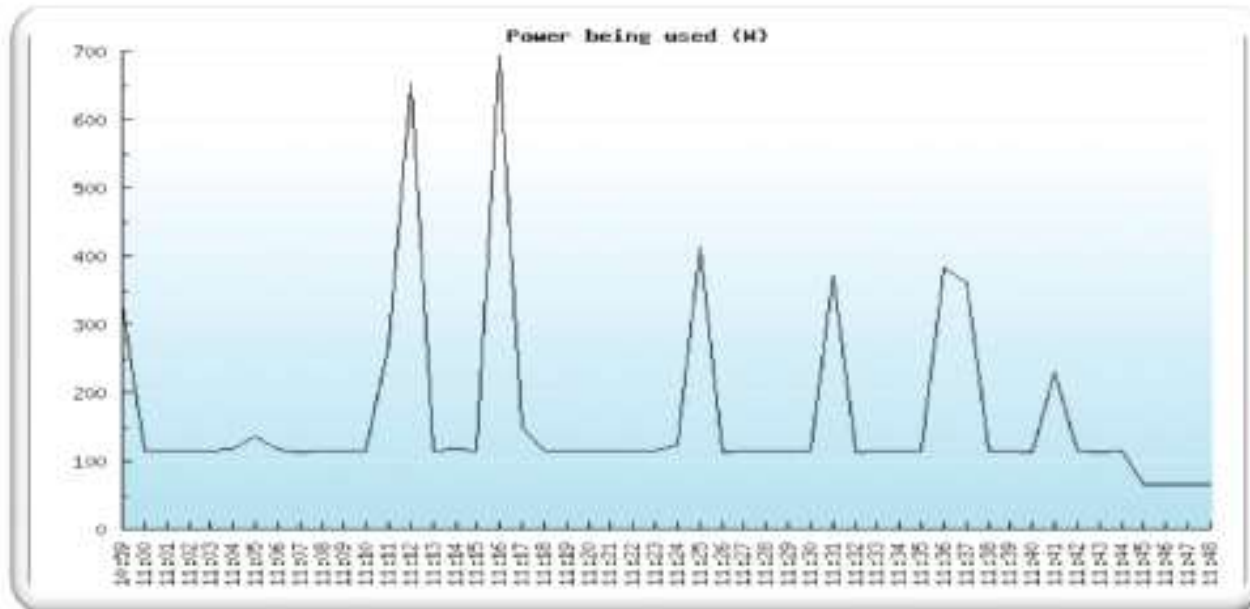
PLUG-IN SMART METER

Plug your appliances into the Smart Strip...



PRODUCTS

View your power usage instantly...



PRODUCTS

And get detailed summaries of your office!

A snapshot of your statistics	Value	Unit
Power being consumed now	67	W
Number of devices you are controlling now	2	
Energy consumed	926.1	kWh
Carbon produced	398.2	kg CO2
Money spent	101.87	£

BBS Professional Server statistics	Value	Unit
Power being consumed now	10,446	W
Total number of devices being controlled	284	
Energy consumed	20,568.9	kWh
Carbon produced	8,844.6	kg CO2
Money spent	2,262.58	£

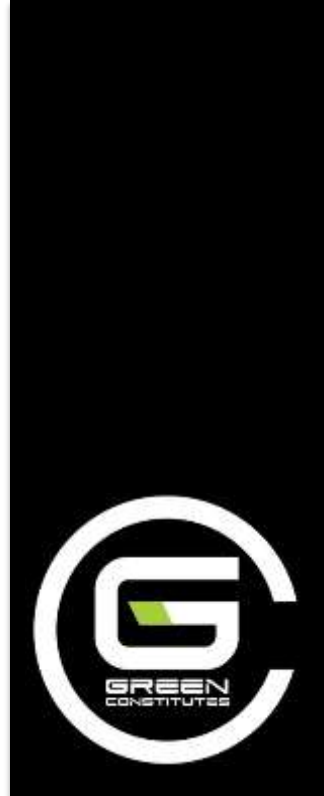
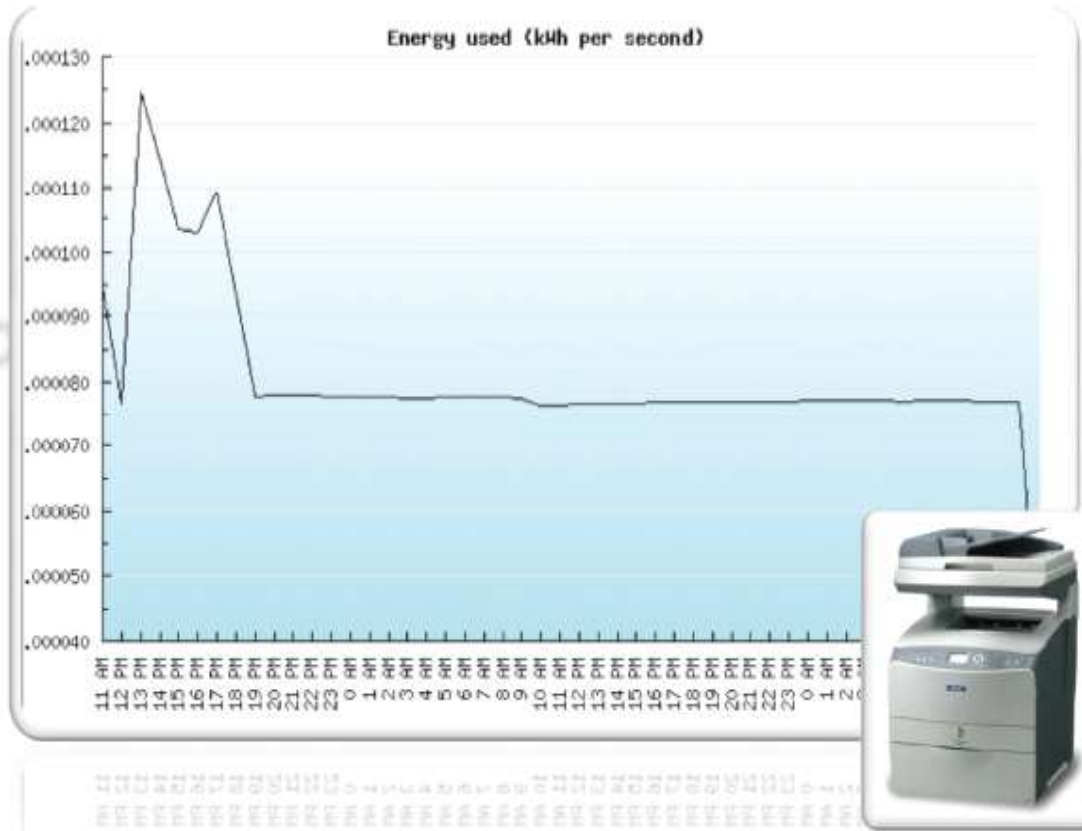


ACTIVE ENERGY MANAGEMENT

- Allow remote switching via Internet, iPhone
- Timed switching
- Automatic switching with safety interlock for computers
- Workgroup equipment powerdown

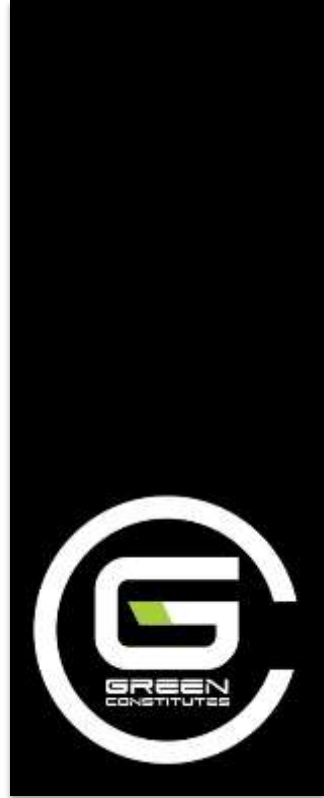
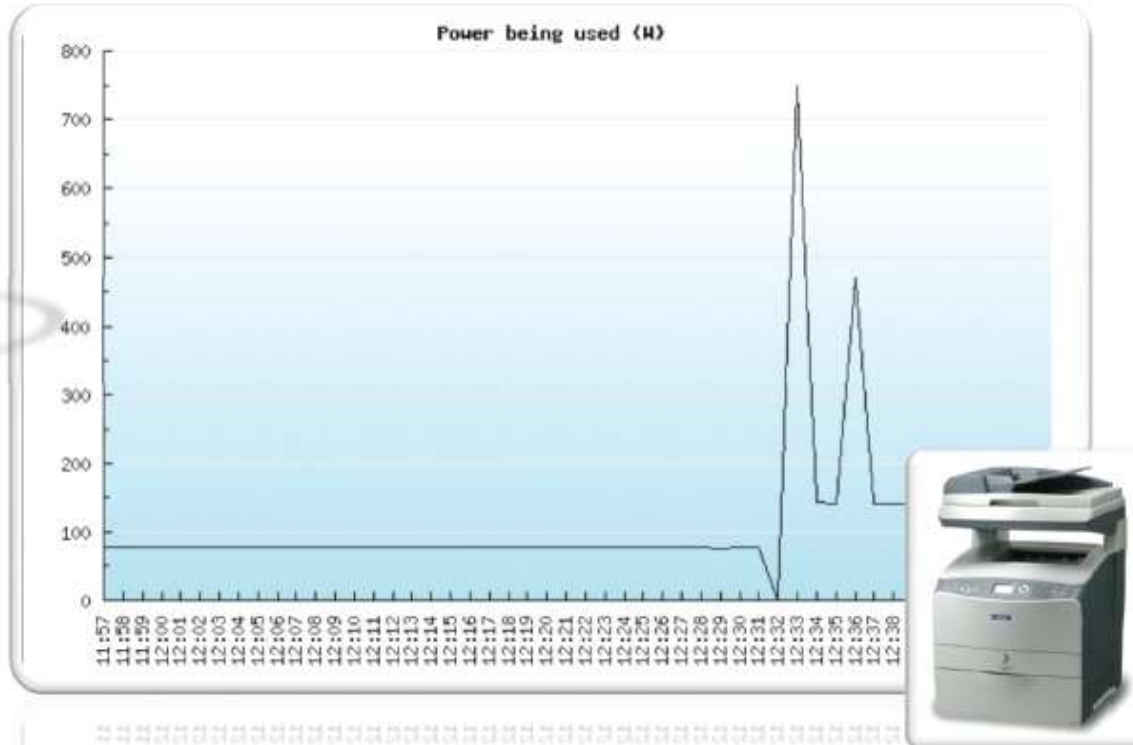


ACTIVE ENERGY MANAGEMENT



At 5.30pm (end of office hour), devices are powered down completely if they're not being used

ACTIVE ENERGY MANAGEMENT



At 8.30am (start of office hour), devices are repowered back just before staff arrive for work

ACTIVE ENERGY MANAGEMENT



BBS Powerdown screensaver hibernates your PC and ready for BBS Pro to safely turn the machine off overnight

ACTIVE ENERGY MANAGEMENT

MEASUREMENT & REPORTING

Reporting is provided at the correct level of details:

- Company level
- Building level
- Circuit level
- Department level
- Individual or appliance level

Or directly via CSV, Excel, XML etc.



ACTIVE ENERGY MANAGEMENT

REPORTING

Summary by department

Group	Energy / kWh	Carbon / kgCO2	Cost / £
(General)	8.73	0.96	3.76
1074	0.20	0.02	0.09
Office eqpt	1.12	0.12	0.48
Operations	1.18	0.13	0.51
Total	11.23	1.23	4.84

PCs that were left running overnight

The following PCs were left running last night.

Socket	User	6 PM	7 PM	8 PM	9 PM	10 PM	11 PM	12 AM	1 AM	2 AM	3 AM	4 AM	5 AM	6 AM	7 AM	Total	Energy	Cost	Carbon
Coffee Machine (1025)		0	0	0	0	0	0	0	0	0	0	0	0	0	0	0	0.00	0.00	0.00
Rob Iles (1061)		56	57	57	56	57	56	56	56	58	57	56	57	57	57	14	0.80	0.09	0.34
David Verwey (1067)		0	0	0	0	0	0	0	0	0	0	0	0	0	0	0	0.00	0.00	0.00
Darryl Mattocks (1073)	demo	77	77	77	77	77	77	77	77	77	77	77	77	77	77	14	1.08	0.12	0.46
Adrian Green (1079)	adrian33	0	0	0	0	0	0	0	0	0	0	0	0	0	0	0	0.00	0.00	0.00
DKM Bench (1113)		0	0	0	0	0	0	0	0	0	0	0	0	0	0	0	0.00	0.00	0.00
Printers (1135)		0	0	0	0	0	0	0	0	0	0	0	0	0	0	14	0.00	0.00	0.00
Chris Richardson (1142)	Chris	0	0	0	0	0	0	0	0	0	0	0	0	0	0	0	0.00	0.00	0.00
Fridge (EM) (1149)		35	0	0	0	25	9	0	0	0	35	0	0	0	11	14	0.11	0.01	0.05
Darryl Mattocks (EM) (1153)		65	66	66	66	65	66	117	115	65	66	66	65	65	65	14	1.02	0.11	0.44
Ross Jarvis (1161)		0	0	0	0	0	0	0	0	0	0	0	0	0	0	0	0.00	0.00	0.00



SUMMARY

- **ENVIRONMENT**

Monitor and measure your energy usage

Reduce carbon emissions by shutting down equipment when not in use.

- **SAVE ENERGY**

Reduce your energy bills

Completely cut power to your appliances at the touch of a button.

- **SAVE MONEY**

Reduce your electricity bill by switching off devices left on standby mode.

- **CONTROL**

Control all your office appliances at the push of a button.



THANK YOU

Questions & Answers

