



LED Tubes





Tubes

Start quickly and not easy to break

No UV or infrared radiation, no flicker.
Not easy to break when switch on and off frequently

Against dizzy, higher light transmittance

Against dizzy, higher light transmittance, solid die-casting shell

Eight times working life

Long life span. Eight times working life than traditional fluorescent light

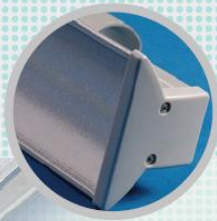
High efficiency, high power and high reliability

Constant current driver, high efficiency, high power factor and reliability





LED Tubes



Certifications



Energy-saving and environmental-protection, saving more than **56%** power

Energy-saving, high luminous efficiency, compare traditional fluorescent light can save 56% power

Green product and environment-protection

Green product and environment-protection, recycling

Good dispersion of heat

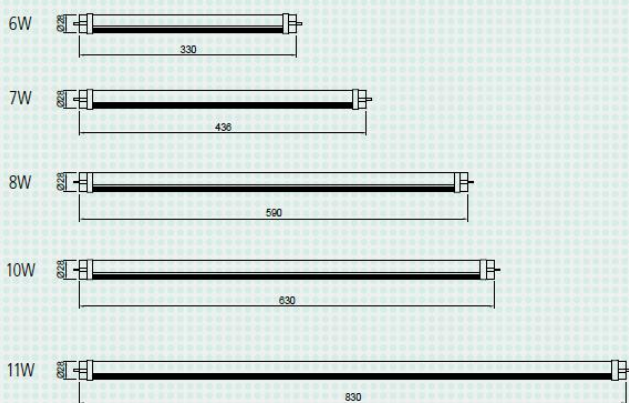
Use imported Aluminum die-casing shell, good dispersion of heat, lower brightness decay





T Series

Product Type	<i>BY-T84/6W-GBPC</i>	<i>BY-T108/7W-GBPC</i>	<i>BY-T144/8W-GBPC</i>	<i>BY-T168/10W-GBPC</i>
Nominal Wattage	6W	7W	8W	10W
LED Quantities	84	108	144	168
Operating Voltage	AC 100-240V/AC 90-305V	AC 100-240V/AC 90-305V	AC 100-240V/AC 90-305V	AC 100-240V/AC 90-305V
Frequency	50Hz/60Hz	50Hz/60Hz	50Hz/60Hz	50Hz/60Hz
Luminous Flux	450 lm	600 lm	750 lm	900 lm
Color Temperature	2800-7000K	2800-7000K	2800-7000K	2800-7000K
Color Rendering Index	≥75%	≥75%	≥75%	≥75%
Power Factor	0.90	0.90	0.90	0.90
Power Efficiency	90%	90%	90%	90%
Size	(26)28x330	(26)28x436	(26)28x590	(26)28x630
Weight	0.16kg	0.20kg	0.26kg	0.28kg
Operating Temperature	-25°C~45°C	-25°C~45°C	-25°C~45°C	-25°C~45°C
LED working life	50000H	50000H	50000H	50000H

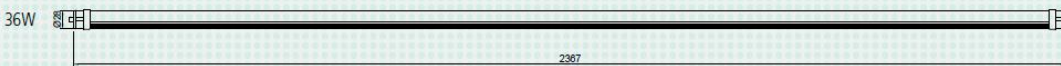
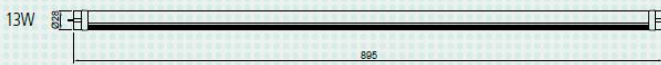




LED Tubes



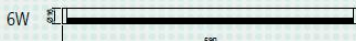
BY-T192/11W-GBPC	BY-T216/13W-GBPC	BY-T288/18W-GBPC	BY-T348/22W-GBPC	BY-T576/36W-GBPC
11W	13W	18W	22W	36W
192	216	288	348	576
AC 100-240V/AC 90-305V	AC 100-240V/AC 90-305V	AC 100-240V/AC 90-305V	AC 100-240V/AC 90-305V	AC 100-240V/AC 90-305V
50Hz/60Hz	50Hz/60Hz	50Hz/60Hz	50Hz/60Hz	50Hz/60Hz
1000 lm	1200 lm	1500 lm	1900 lm	3100 lm
2800-7000K	2800-7000K	2800-7000K	2800-7000K	2800-7000K
≥75%	≥75%	≥75%	≥75%	≥75%
0.90	0.90	0.90	0.90	0.90
90%	90%	90%	90%	90%
(26)28x830	(26)28x895	(26)28x1198	(26)28x1500	(26)28x2367
0.30kg	0.34kg	0.46kg	0.58kg	0.92kg
-25°C~45°C	-25°C~45°C	-25°C~45°C	-25°C~45°C	-25°C~45°C
50000H	50000H	50000H	50000H	50000H





T5 Series

Product Type	<i>BY-T5-96/6W-GBPC</i>	<i>BY-T5-144/8W-GBPC</i>	<i>BY-T5-192/12W-GBPC</i>	<i>BY-T5-240/15W-GBPC</i>
Nominal Wattage	6W	8W	12W	15W
LED Quantities	96	144	192	240
Operating Voltage	AC 100-240V	AC 100-240V	AC 100-240V	AC 100-240V
Frequency	50Hz/60Hz	50Hz/60Hz	50Hz/60Hz	50Hz/60Hz
Luminous Flux	520 lm	680 lm	1000 lm	1300 lm
Color Temperature	2800-7000K	2800-7000K	2800-7000K	2800-7000K
Color Rendering Index	≥75%	≥75%	≥75%	≥75%
Power Factor	0.9	0.9	0.9	0.9
Power Efficiency	85%	85%	85%	85%
Size	16x590mm	16x900mm	16x1198mm	16x1500mm
Weight	0.16kg	0.22kg	0.32kg	0.36kg
Operating Temperature	-25°C~45°C	-25°C~45°C	-25°C~45°C	-25°C~45°C
LED working life	50000H	50000H	50000H	50000H



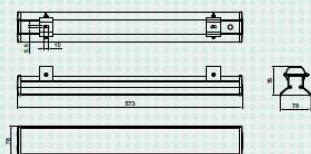


LED Tubes

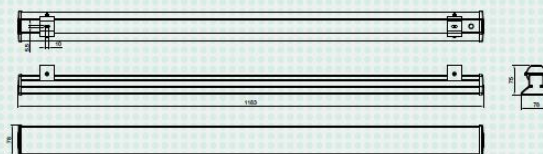


LS Series

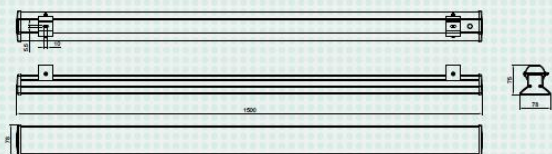
Product Type	<i>BY-LS144/8W-GBPC</i>	<i>BY-LS288/18W-GBPC</i>	<i>BY-LS348/22W-GBPC</i>	<i>BY-LS432/30W-GBPC</i>
Nominal Wattage	8W	18W	22W	30W
LED Quantities	144	288	348	432
Operating Voltage	AC 100-240V	AC 100-240V	AC 100-240V	AC 100-240V
Frequency	50Hz/60Hz	50Hz/60Hz	50Hz/60Hz	50Hz/60Hz
Luminous Flux	750 lm	1500 lm	1900 lm	2400 lm
Color Temperature	2800-7000K	2800-7000K	2800-7000K	2800-7000K
Color Rendering Index	≥75%	≥75%	≥75%	≥75%
Power Factor	0.90	0.90	0.90	0.90
Power Efficiency	87%	87%	87%	87%
Size	573x78x75	1183x78x75	1500x78x75	1183x78x75
Weight	0.67kg	1.22kg	1.3kg	1.35kg
Operating Temperature	-25°C~45°C	-25°C~45°C	-25°C~45°C	-25°C~45°C
LED working life	50000H	50000H	50000H	50000H



8W



18W / 30W



22W

